

Creating a Resilient Community Together

FireSmart Principles

As residents of the picturesque Belcarra, nestled among beautiful forests and breathtaking landscapes of the Indian Arm, we are fortunate to call this place home. However, living in a region known for its natural beauty also means being aware of the potential risks associated with wildfires. Belcarra is committed to ensuring the safety and well-being of our community, and that is why we have developed and are implementing recommendations of a comprehensive Community Wildfire Resiliency Plan. Wildfire is a shared risk and responsibility and by taking actions to protect your home from the threat of wildfire, helps build a resilient Belcarra. Together, we can reduce the risk of wildfires and protect the natural beauty and charm of our village. Join us in this collective effort to build a FireSmart community!

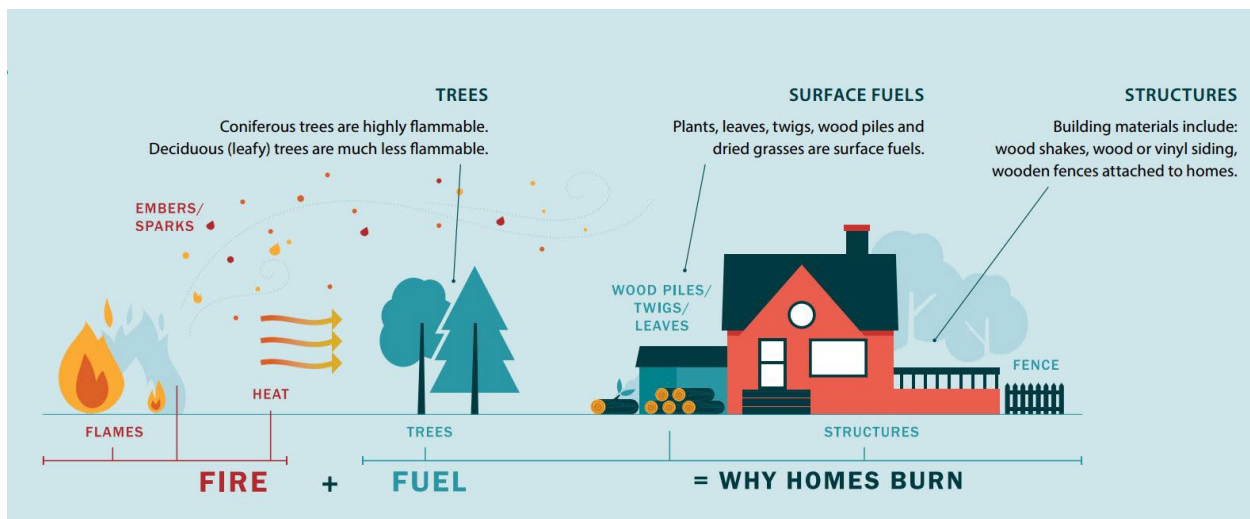
Learn more about the Seven FireSmart Disciplines at [FireSmart Canada](#)

Understanding Wildfire Hazards

Wildfires are a natural and essential part of our ecosystem. However, when they occur near human settlements, they can pose significant risks to property and lives. Understanding the hazards associated with wildfires is crucial in mitigating their potential impact.

Common wildfire hazards include:

- 1. Fuel:** Dry grass, shrubs, dead leaves, fallen branches and combustible materials act as fuel for wildfires. Accumulated vegetation close to homes can increase the risk of fire spread.
- 2. Embers:** Wind-blown embers can travel long distances, landing on rooftops, decks, and in gutters. These embers can ignite flammable materials and quickly start fires.
- 3. Access:** Limited access for emergency vehicles and inadequate water sources can hinder firefighting efforts during a wildfire event.
- 4. Topography:** Slopes can influence fire behavior, leading to increased fire intensity and spread.



Read more about how wildfires grow and spread in the [FireSmart BC Homeowner's Manual](#)

FireSmart provides a proactive approach to reducing wildfire risks in our community. By implementing FireSmart principles, each of us can make a significant difference in safeguarding our homes and promoting community resilience.

Here are some key FireSmart principles to consider:

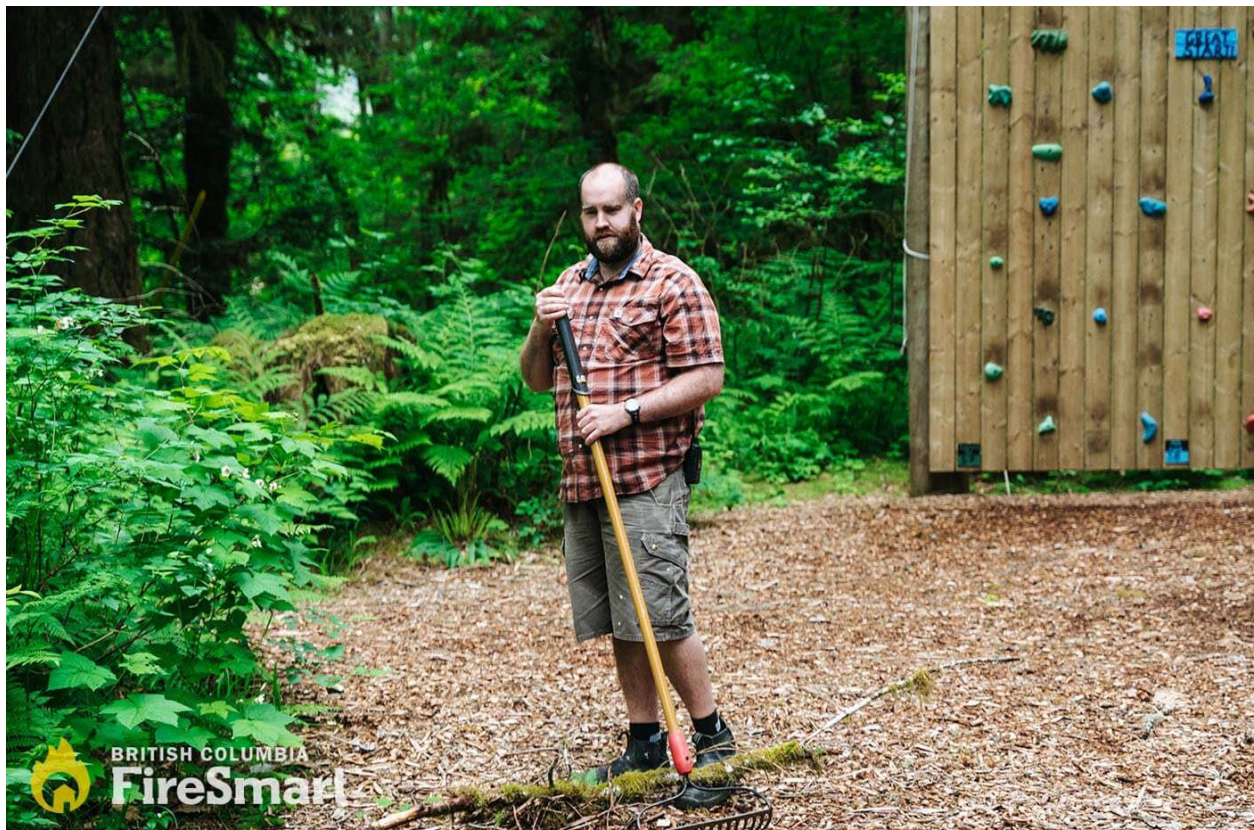
1. FireSmart Landscaping: Creating and maintaining a defensible space around your property is essential. Clearing flammable debris, reducing vegetation density, and spacing trees and shrubs apart help reduce the potential fuel for wildfires. Remove vegetation debris from your yard regularly and maintain adequate spacing between trees and shrubs, especially those close to your home. Minimize the risk of embers igniting vulnerable areas by trimming tree branches the overhand your roof or deck. Check out the [FireSmart BC Landscaping Guide](#) to learn about fire-resistant plants and get tips on how to create a FireSmart landscape!

2. Home Ignition Zone: Focus on the immediate area around your home, known as the [Home Ignition Zone \(HIZ\)](#). Use non-combustible materials for roofs, decks, and fences. Maintain a clear and well-irrigated area around your home. Remove flammable items, such as firewood piles, propane tanks, and dense shrubbery, from within 10 meters of your home.

3. Fuel Management: Managing forest landscapes around our village and properties can impede the spread of wildfires. The Village of Belcarra is working towards reducing hazardous conditions of forests in our backyards.

4. Access and Defensible Space: Ensure your property has adequate access for emergency vehicles and maintain clear driveways and roads. Trim tree branches near roadways and maintain an open area around your home.

5. Education and Preparedness: Stay informed about wildfire risks, evacuation procedures, and emergency alerts. Develop a family emergency plan that includes evacuation routes, meeting points, and essential contacts. Ensure all family members are familiar with the plan. Prepare an emergency kit with essential supplies such as non-perishable food, water, flashlights, batteries, first aid supplies, and important documents. Download an [Evacuation Checklist](#) to have readily available in case of an emergency.



Join Us in Building a FireSmart Community

Our aim is to empower every resident in Belcarra with the knowledge and resources to contribute to a safer and more resilient community. Remember, every action you take to reduce wildfire hazards in and around your property contributes to the overall resilience of our community. By implementing these measures and adopting FireSmart principles, we can create a safer, more fire-resistant Belcarra.

Let's make Belcarra a shining example of wildfire resilience!

Contact Information: Email: snovak@belcarra.ca