

Official Community Plan
Context Map

Legend

-  Village of Belcarra Municipal Boundary

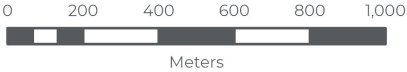
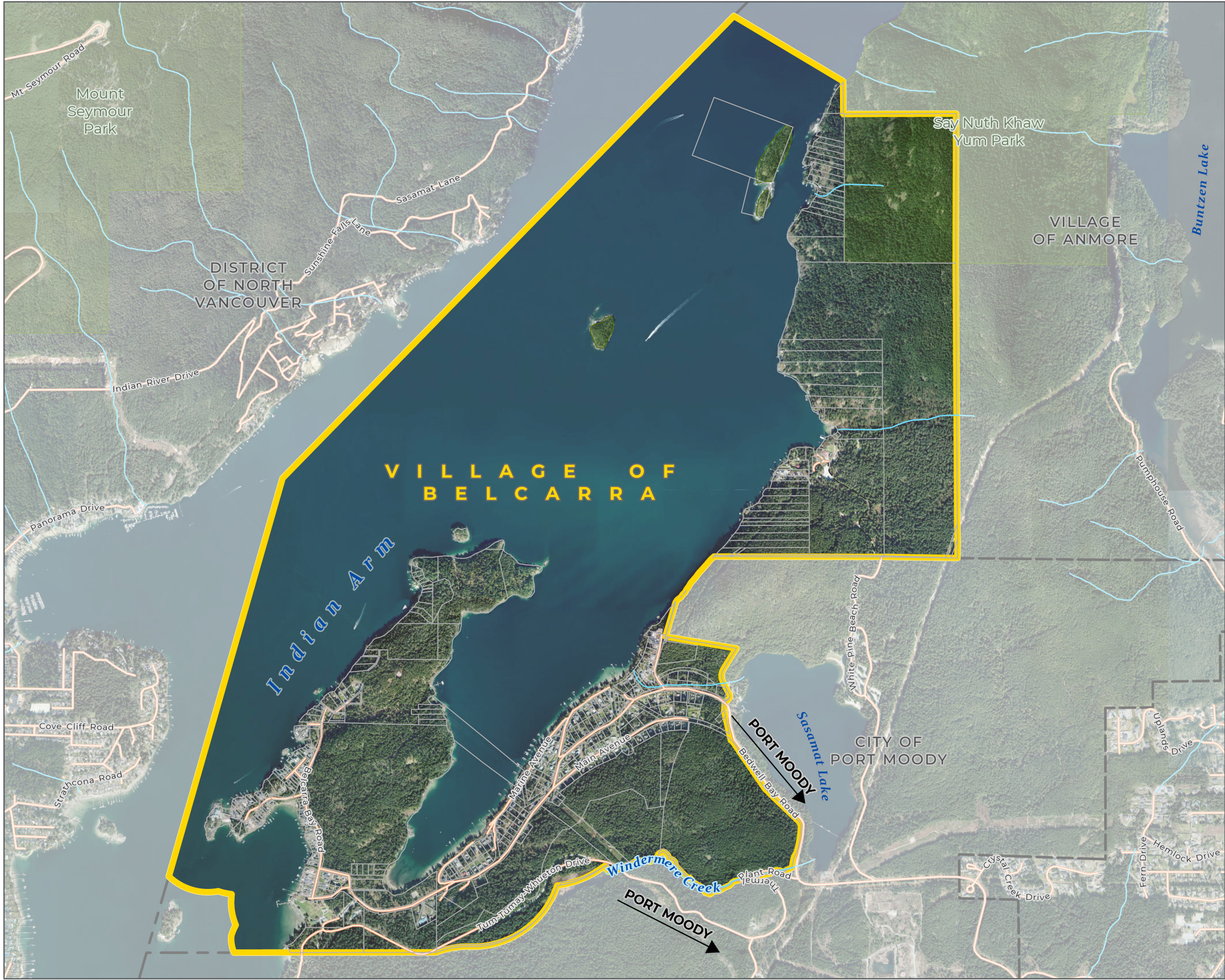


FIGURE 1



Official Community Plan
Aerial Photograph

Legend




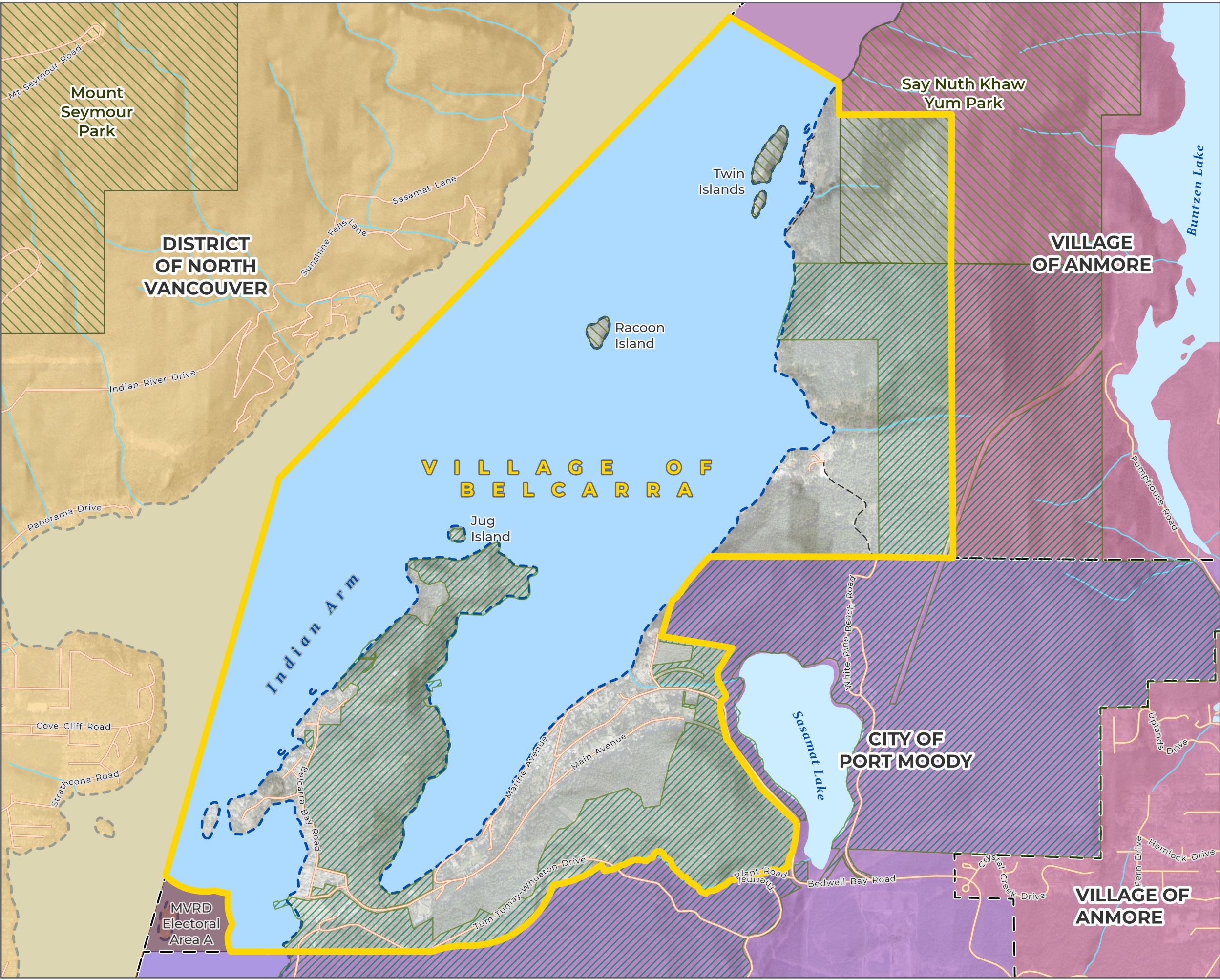
-  Village of Belcarra Municipal Boundary
-  Municipal Boundaries
-  Provincial Parks



FIGURE 2

Last updated by akhliestkova on May 11, 2022 at 3:15 PM
Last exported by akhliestkova on May 11, 2022 3:14 PM
Last printed by akhliestkova on September 25, 2017 11:46 AM
\\uslurban-systems.com\projects\Projects_VAN\4204\0005\01\VD-Design\GIS\Projects\Pro_Projects\4204_0005\01.aprx\Neighbouring Jurisdictions



Official Community Plan
Neighbouring Jurisdictions

Legend

- Village of Belcarra Municipal Boundary
- Provincial Parks
- VFPA Jurisdiction
- City of Port Moody
- Village of Anmore
- District of North Vancouver
- MVRD Electoral Area A
- tæmtæmîx*tæn/Belcarra Regional Park

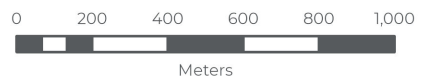
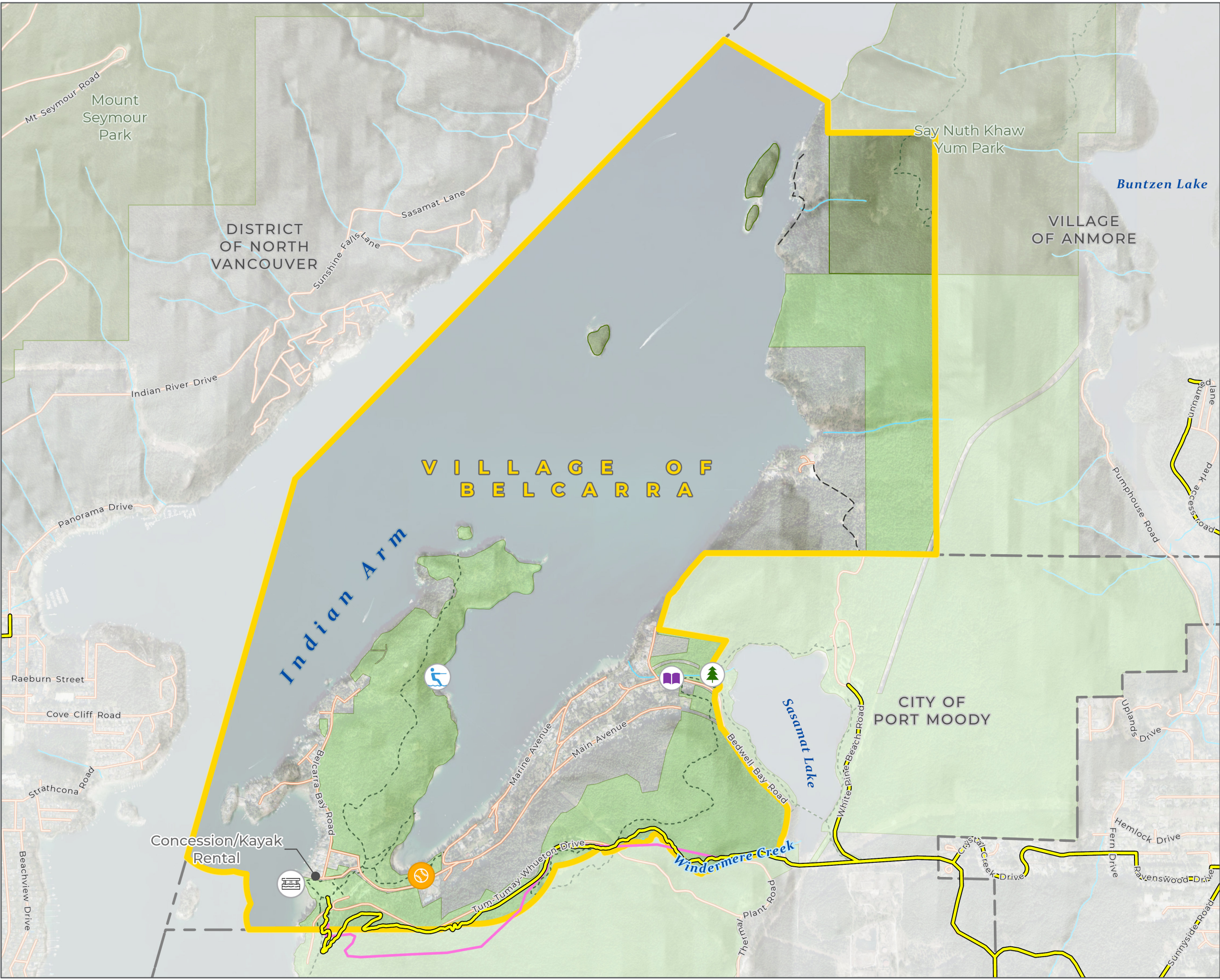


FIGURE 3

Last updated by akhlietkova on May 17, 2022 at 10:04 AM
Last exported by akhlietkova on May 17, 2022 10:04 AM
Last printed by akhlietkova on September 25, 2017 11:46 AM
\\slurban-systems.com\projects\Projects_VAN\4204\0005\01\VD-Design\GIS\Projects\Pro_Projects\4204.0005.01.aprx\Parks and Recreation



Official Community Plan Parks and Recreation

Legend

- Municipal Boundaries
- Village of Belcarra Municipal Boundary
- təmtəmix'tən/Belcarra Regional Park
- Provincial Parks
- Pier
- Free Library
- Vancouver Water Ski Club
- Sasamat Outdoor Centre
- Multi-Sport Court
- Pedestrian/Hiking Trail
- Cycling Trail
- Regional Greenway 2050

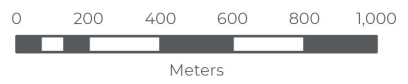
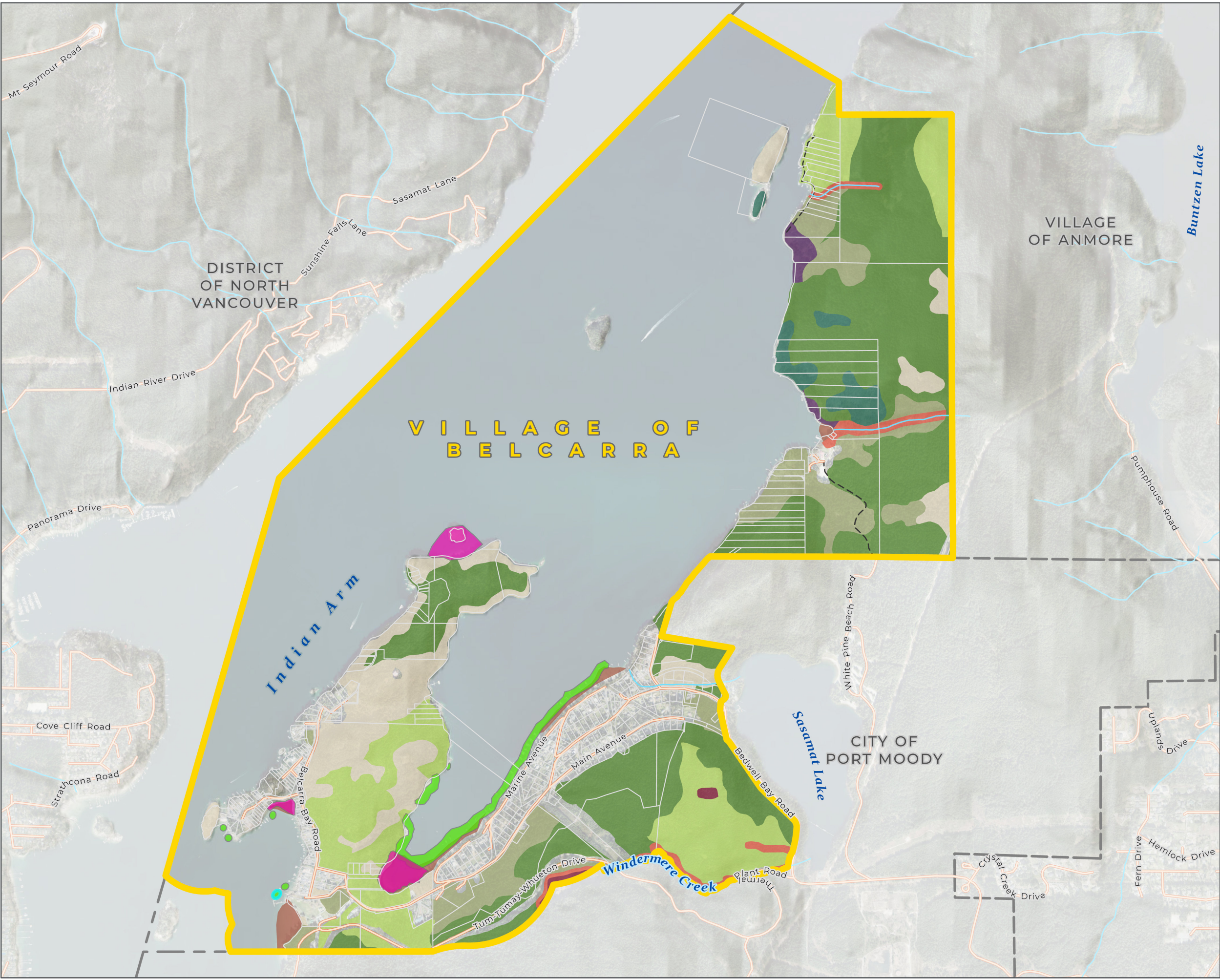


FIGURE 4

\\uslurban-systems.com\projects\Projects_VAN\4204\0005\01\VD-Design\GIS\Projects\Pro_Projects\4204_0005\01.aprx\Environmentally Sensitive Areas
Last updated by akhilestkova on May 25, 2022 at 9:56 AM
Last exported by akhilestkova on May 25, 2022 9:55 AM
Last printed by akhilestkova on September 25, 2017 11:46 AM



**Official Community Plan
Metro Vancouver Environmentally
Sensitive Areas (2020)**

Legend

- Village of Belcarra Municipal Boundary
- Municipal Boundaries
- VFPA Important Environmental Areas
- Eelgrass
- Intertidal
- Mature Forest (ME)
- Mature Forest (SE)
- Non SE/ME
- Riparian
- Sparsely Vegetated
- Wetland
- Woodland
- Young Forest
- Unclassified Road

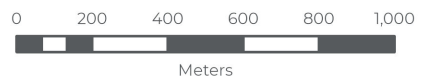
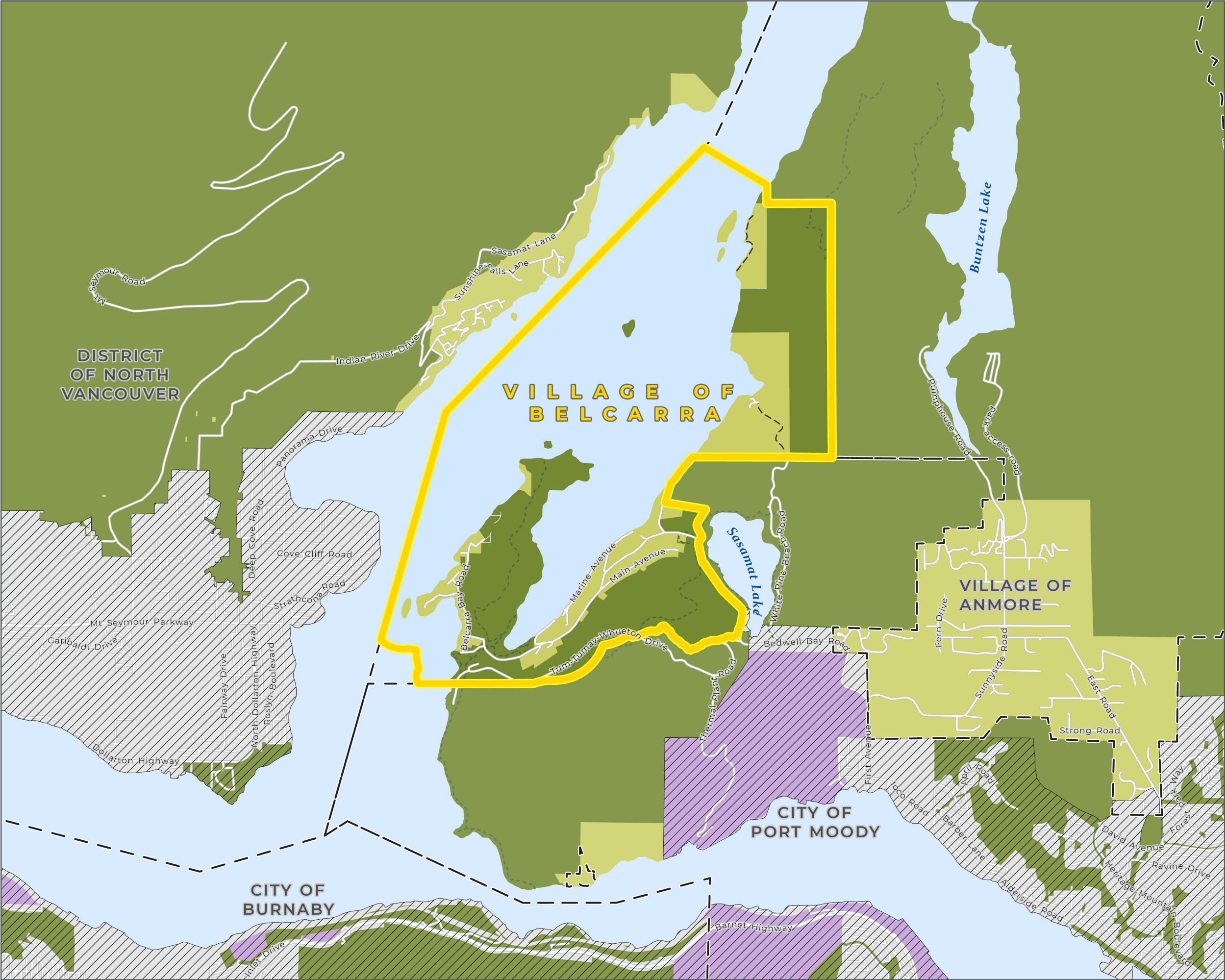


FIGURE 5

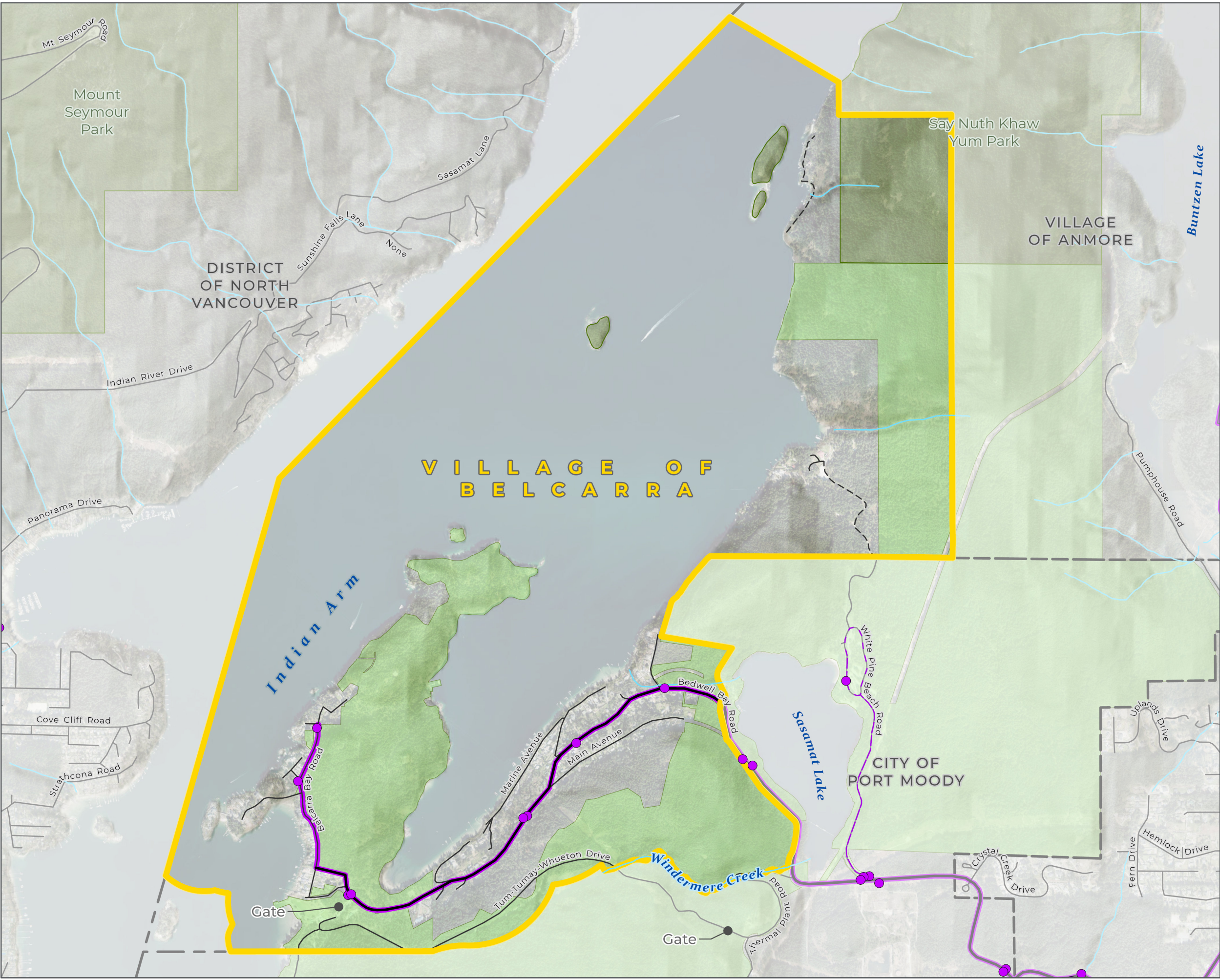


Official Community Plan
Metro Vancouver
2040 Land Use Designations

- Legend**
- Village of Belcarra Municipal Boundary
 - Municipal Boundaries
 - Urban Containment Boundary
 - Conservation/Recreation
 - General Urban
 - Industrial
 - Rural



FIGURE 6



Official Community Plan Transportation

Legend

- Village of Belcarra Municipal Boundary
- Municipal Boundaries
- Provincial Parks
- təmtəmixʔtən/Belcarra Regional Park
- Transit Stop
- Bus Route
- Seasonal Bus Route
- Primary Road
- Secondary Road
- Unclassified Road

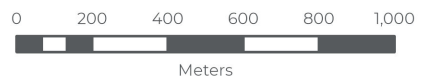
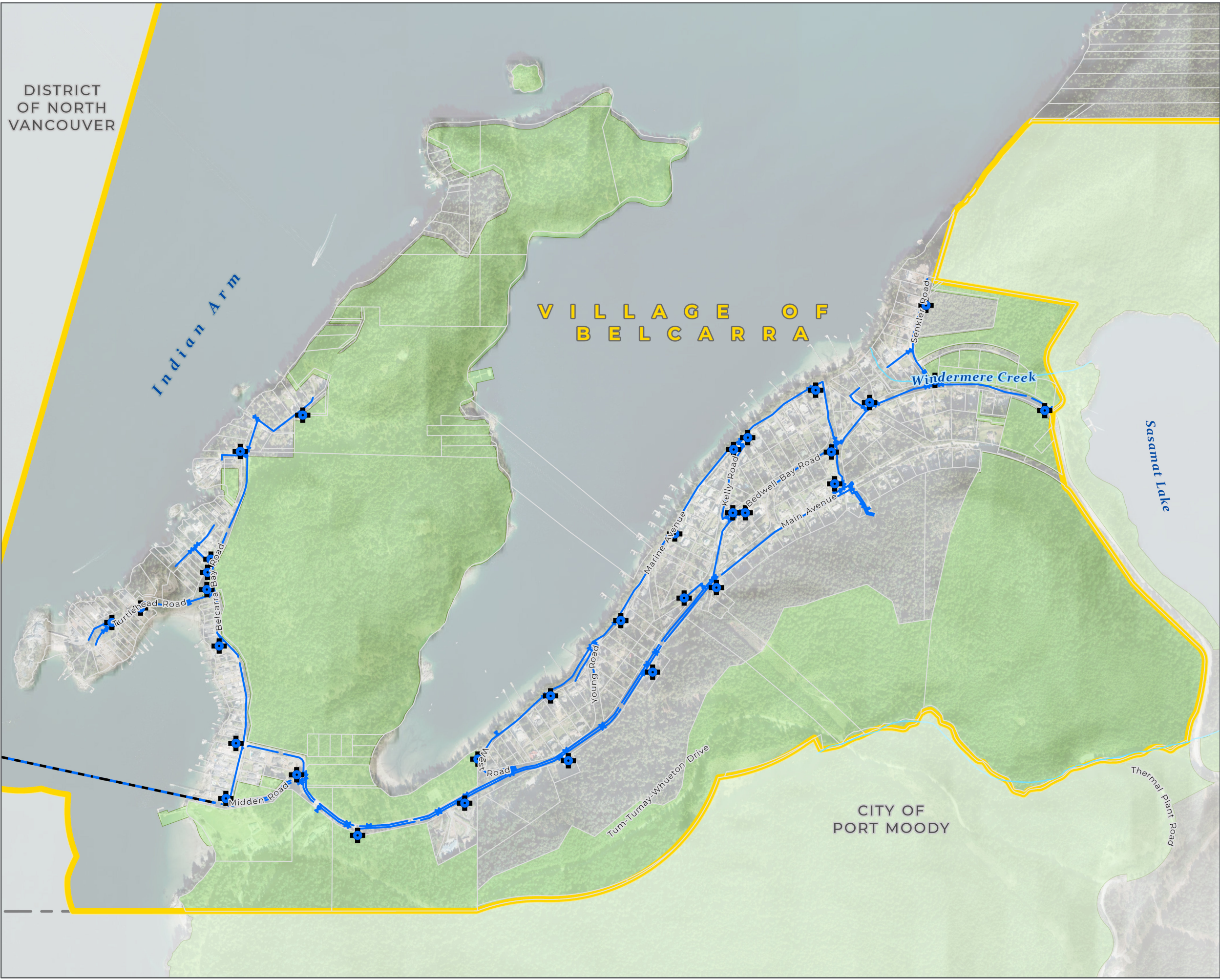


FIGURE 7

Last updated by akhilestkova on May 25, 2022 at 9:55 AM
Last exported by akhilestkova on May 25, 2022 9:54 AM
Last printed by akhilestkova on September 25, 2017 11:46 AM



Official Community Plan
Water Infrastructure

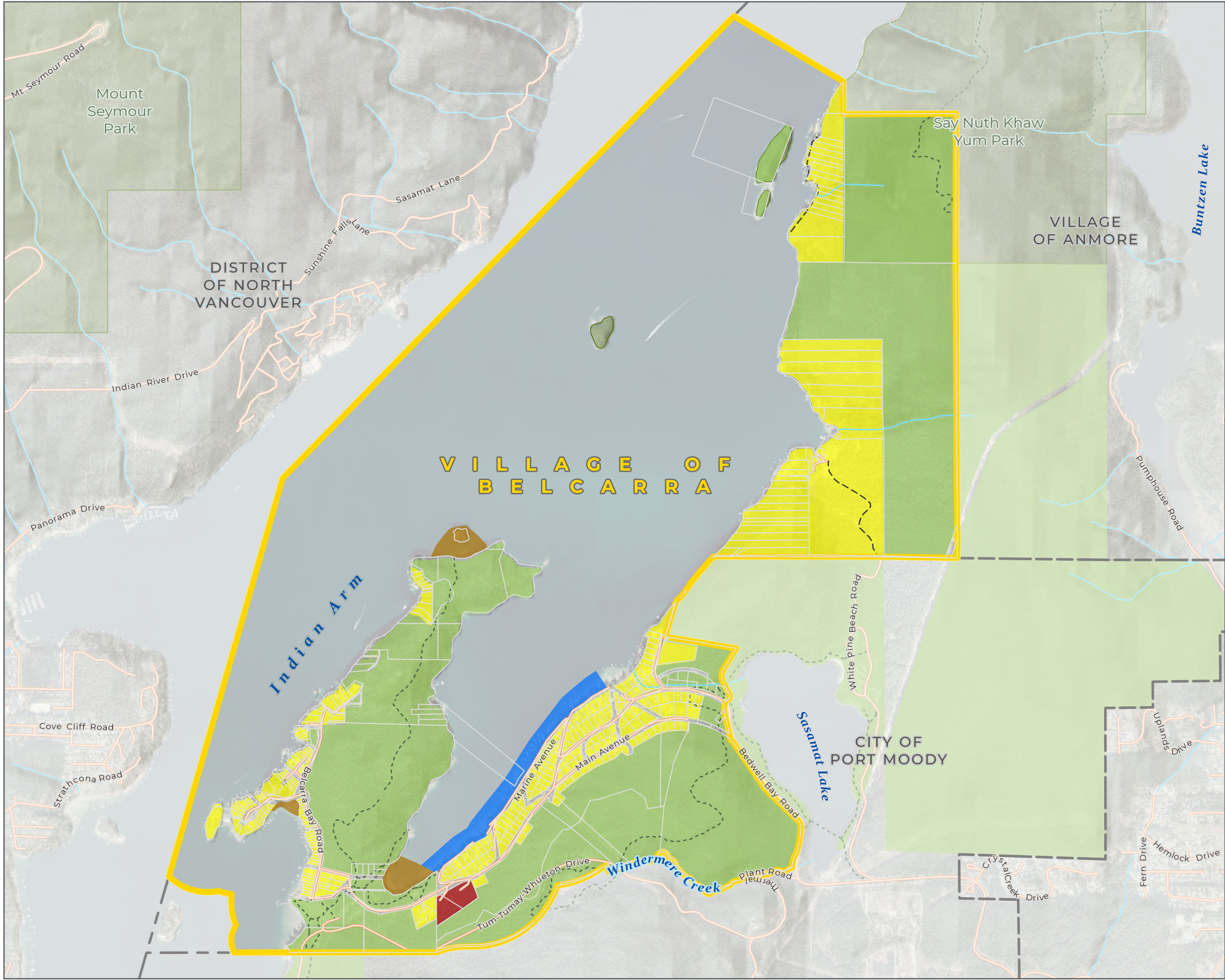
Legend

- Hydrant
- Water Main
- Water from District of North Vancouver
- Village of Belcarra Municipal Boundary
- Municipal Boundaries
- təmtəmix'tən/Belcarra Regional Park



FIGURE 8

\\uslurban-systems.com\projects\Projects_VAN\4204\0005\01\VD-Design\GIS\Projects\Pro_Projects\4204.0005.01.aprx\Water System



Official Community Plan
OCP

Legend

- Village of Belcarra Municipal Boundary
- Municipal Boundaries
- R - Residential
- CL - Civic Institutional
- CN - Civic Marine
- NT - Natural Tidal
- P - Conservation and Recreation
- Pedestrian/Hiking Trail
- Unclassified Road

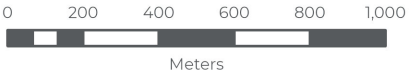
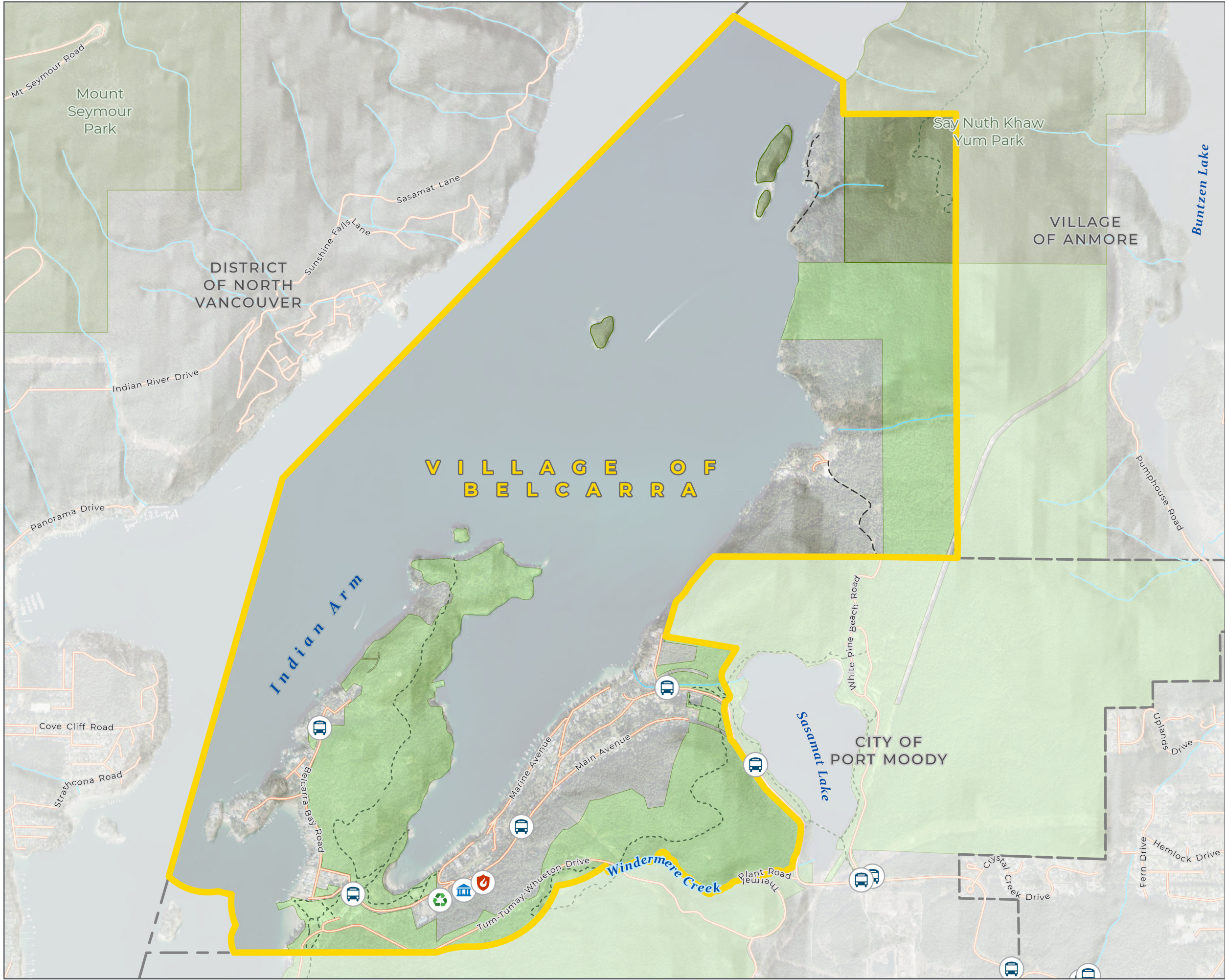


FIGURE 9



Official Community Plan Community Facilities

Legend

- Village of Belcarra Municipal Boundary
- Provincial Parks
- Municipal Boundaries
- Belcarra Municipal Hall
- Waste and Recycling Depot
- Sasamat Volunteer Fire Department
- Transit Stops and Community Message Boards (located at the Transit Stops)
- təmtəmixʷtən/Belcarra Regional Park
- Metro Vancouver & BC Parks Pedestrian/Hiking trail

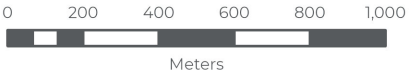


FIGURE 10