



VILLAGE OF BELCARRA
Moratorium Lifted by the
Vancouver Fraser Port Authority
June 15, 2020



The Vancouver Fraser Port Authority (VFPA) plans to lift the 12 year moratorium on recreational docks on June 15, 2020. Information is available on the VFPA website at:

<https://portvancouver.civilspace.io/en/projects/recreational-docks-in-the-port-of-vancouver>

The moratorium will remain on Group Wharfages and single docks on Marine Avenue in Belcarra called the Highway Encroachment Area. This area will be reviewed by the Official Community Plan (OCP) Review Committee. The OCP review has been delayed by COVID 19 pandemic restrictions. The Committee will be formed when restrictions on the pandemic are lifted. Part of the OCP review will include a review of the Bedwell Bay Sustainability Plan. This review to determine how many potential dock sites remain and if amendments need to be made to those sites. There are Environmentally Sensitive Areas (ESA) within this area that will also require review.

The VFPA is sending out letters the week of May 11, 2020, to owners of waterfront property in Belcarra, the District of North Vancouver and the City of Port Moody. The letters will provide information and invite waterfront property owners to a VFPA webinar. See the VFPA link above for webinar details.

- Attached is a copy of the VFPA 'Recreational Docks – Municipal Information / Village of Belcarra document.

May 13, 2020

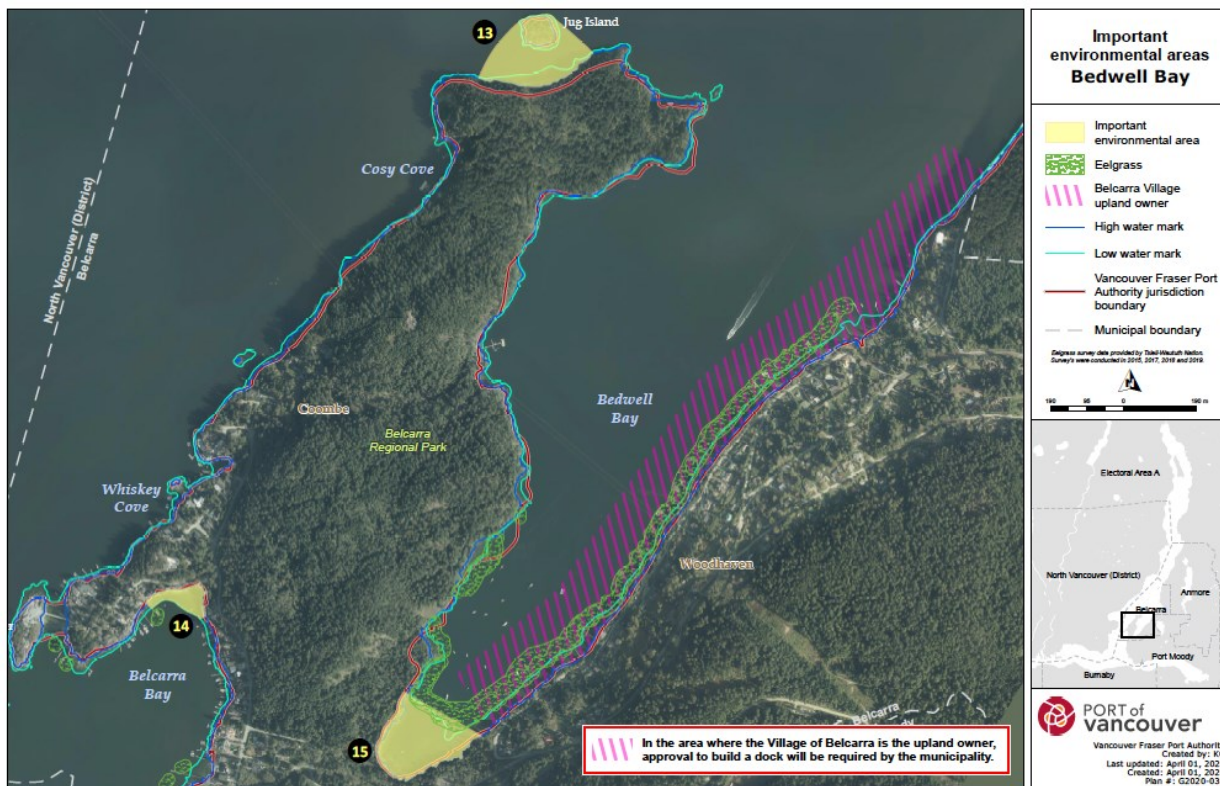
Recreational Docks – Municipal information | Village of Belcarra

Please read the information below as it contains important information relating to the permitting of new docks within the municipality of Belcarra and may affect your application process.

Highway Encroachment Area (HEA)

The port authority is **not accepting** applications for group wharfages (shared docks) and private docks located on the east side of Bedwell Bay in the HEA until the Belcarra Official Community Plan review is complete. The area is denoted in purple on the map below.

Belcarra is the upland owner within this area and group wharfages and private dock sites are allocated within the Official Community Plan. Once this section of the Official Community Plan review is complete, a guidance document on how to apply for a dock will be available. Please contact Belcarra Village Hall for details.



Group Wharfages in Bedwell Bay

As part of the Belcarra Official Community Plan, the Bedwell Bay Sustainability Plan (Plan) was adopted to manage group wharfages (shared docks) and private docks. The Plan identifies four zones where shared and private docks are permitted.

As part of the Official Community Plan process, Belcarra will review the Plan and the allocation of docks to determine how many sites remain and if amendments are required to the remaining sites.

Wishing to build a dock outside of the Highway Encroachment Area.

Before you build your dock, you will need to review the guidelines and submit a [Project and Environmental Review \(PER\) permit application](#) to the port authority. Once approved, apply for a licence. Find out more by reviewing the port authority guidelines.

- Review the Recreational dock guidelines – Burrard Inlet
- Consider a shared dock
- Apply
- Once approved, build your dock

Should you require more information or have questions please contact the port authority by email per@portvancouver.com or call 604.665.9047.