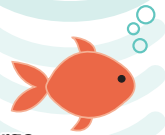
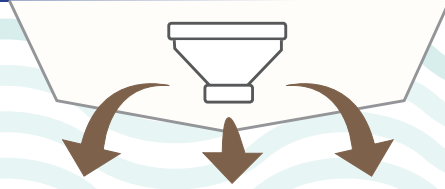




Complying with Sewage Discharge Regulations



Transport Canada regulations **prohibit** the discharge of **raw sewage** directly into the water. Your sewage discharge affects fish, crabs and bivalve shellfish (oysters, clams and mussels), causing contamination which can threaten human health. A violation of this regulation can carry a fine of up to \$1 million or up to 18 months of imprisonment, or both.

Here's what you can do to comply:

OPTION 1

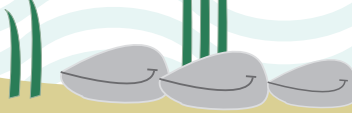
Use a **MARINE SANITATION DEVICE**, or discharge 3nm offshore

OPTION 2

Use a **HOLDING TANK and PUMP-OUT STATION**
(Visit www.ahoybc.com/map to find one near you)

OPTION 3

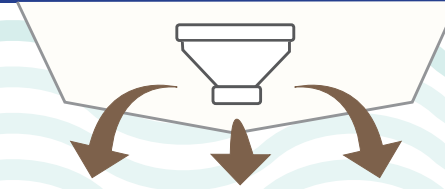
Use a **TEMPORARY STORAGE** like a porta-potty



Contact Transport Canada's Office of Boating Safety at 604-666-2681 or email: TC.PAC.TM.OBS-BSN.TC@TC.GC.CA about regulatory requirements. *Vessel Pollution and Dangerous Chemicals Regulations* are online at: <http://www.laws-lois.justice.gc.ca/eng/regulations/SOR-2012-69/page-1.html>.



Complying with Sewage Discharge Regulations



Transport Canada regulations **prohibit** the discharge of **raw sewage** directly into the water. Your sewage discharge affects fish, crabs and bivalve shellfish (oysters, clams and mussels), causing contamination which can threaten human health. A violation of this regulation can carry a fine of up to \$1 million or up to 18 months of imprisonment, or both.

Here's what you can do to comply:

OPTION 1

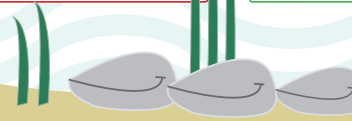
Use a **MARINE SANITATION DEVICE**, or discharge 3nm offshore

OPTION 2

Use a **HOLDING TANK and PUMP-OUT STATION**
(Visit www.ahoybc.com/map to find one near you)

OPTION 3

Use a **TEMPORARY STORAGE** like a porta-potty



Contact Transport Canada's Office of Boating Safety at 604-666-2681 or email: TC.PAC.TM.OBS-BSN.TC@TC.GC.CA about regulatory requirements. *Vessel Pollution and Dangerous Chemicals Regulations* are online at: <http://www.laws-lois.justice.gc.ca/eng/regulations/SOR-2012-69/page-1.html>.

