

Village of Belcarra

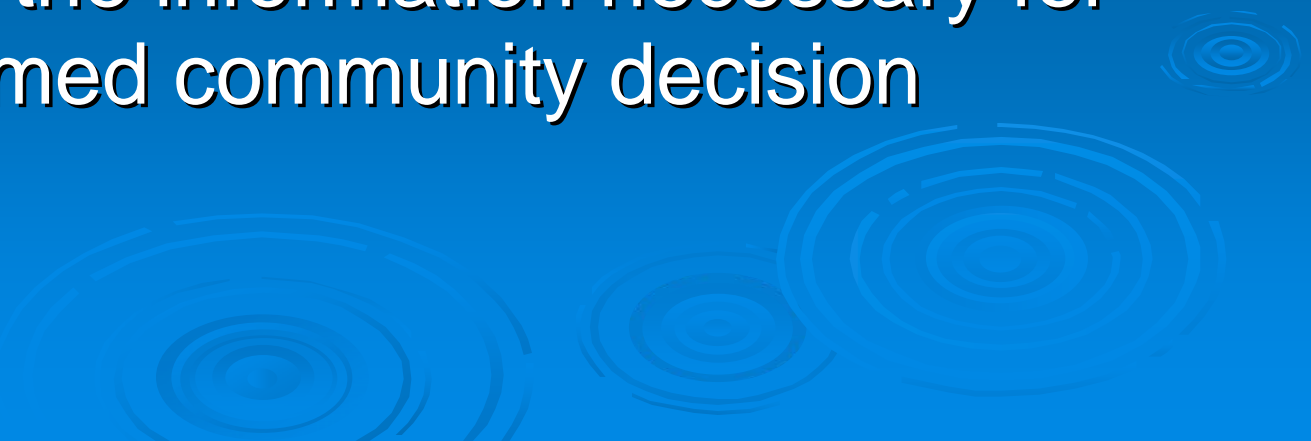
Municipal Potable Water Supply

North Vancouver Supply

October 16, 2006



Purpose of Public Open House

- To present the details and costs to the community
 - Identify the concerns of residents
 - Gather information to permit pre-design completion
 - Provide the information necessary for an informed community decision
- 

North Vancouver Water Supply

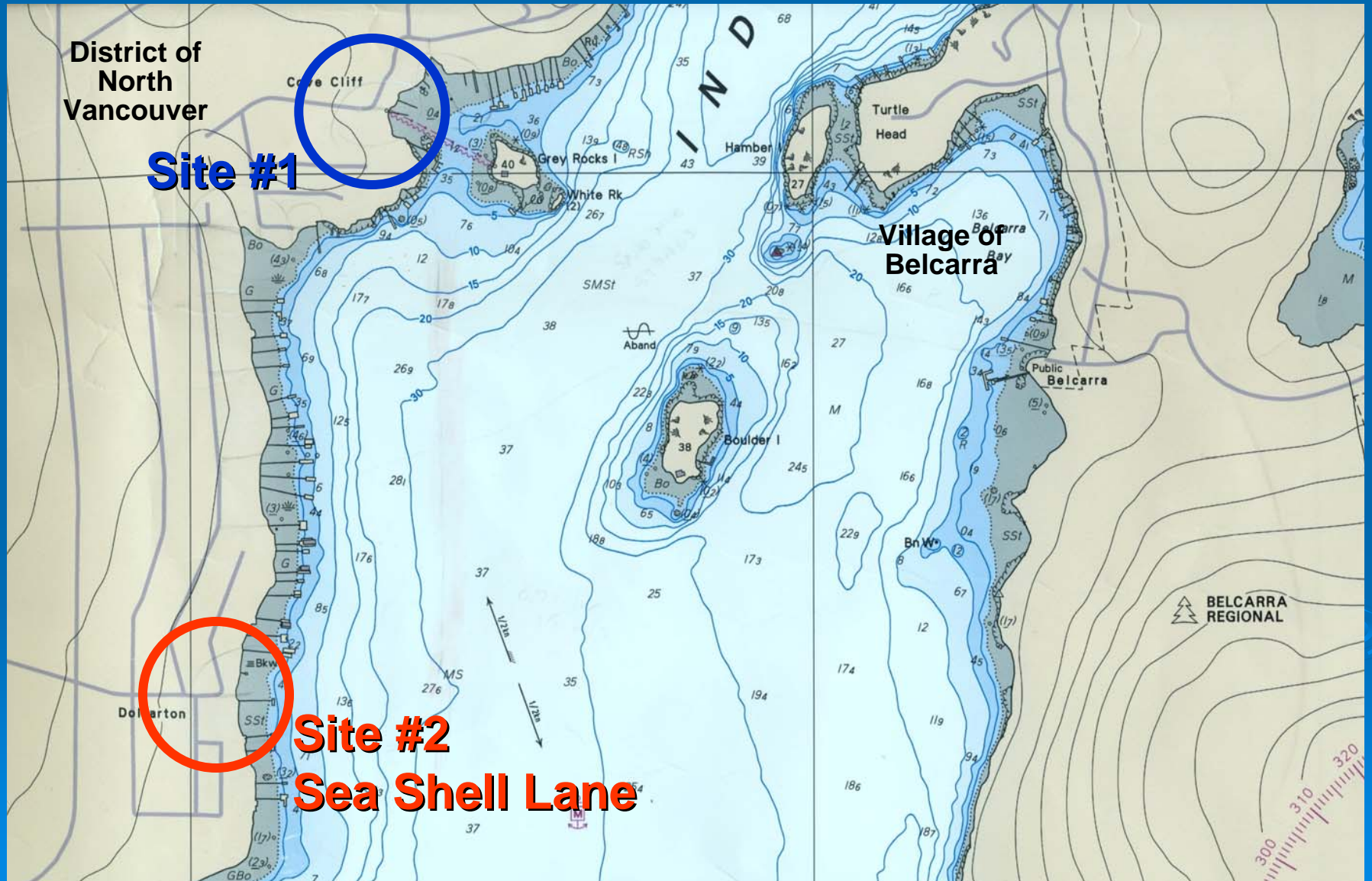
- Will connect the District of North Vancouver water system to Belcarra
- Submerged crossing of the shallow portion of Indian Arm
- Involves two 200 mm ϕ pipelines placed on the sea bed
- Would be buried in shallow areas

Site #1 4545 Strathcona Road



- Preferred North Vancouver connection
- Currently site of a sewage lift station, storm sewer drain and 50 mm water and power cable crossing to Grey Rock Island

Review of Alignments

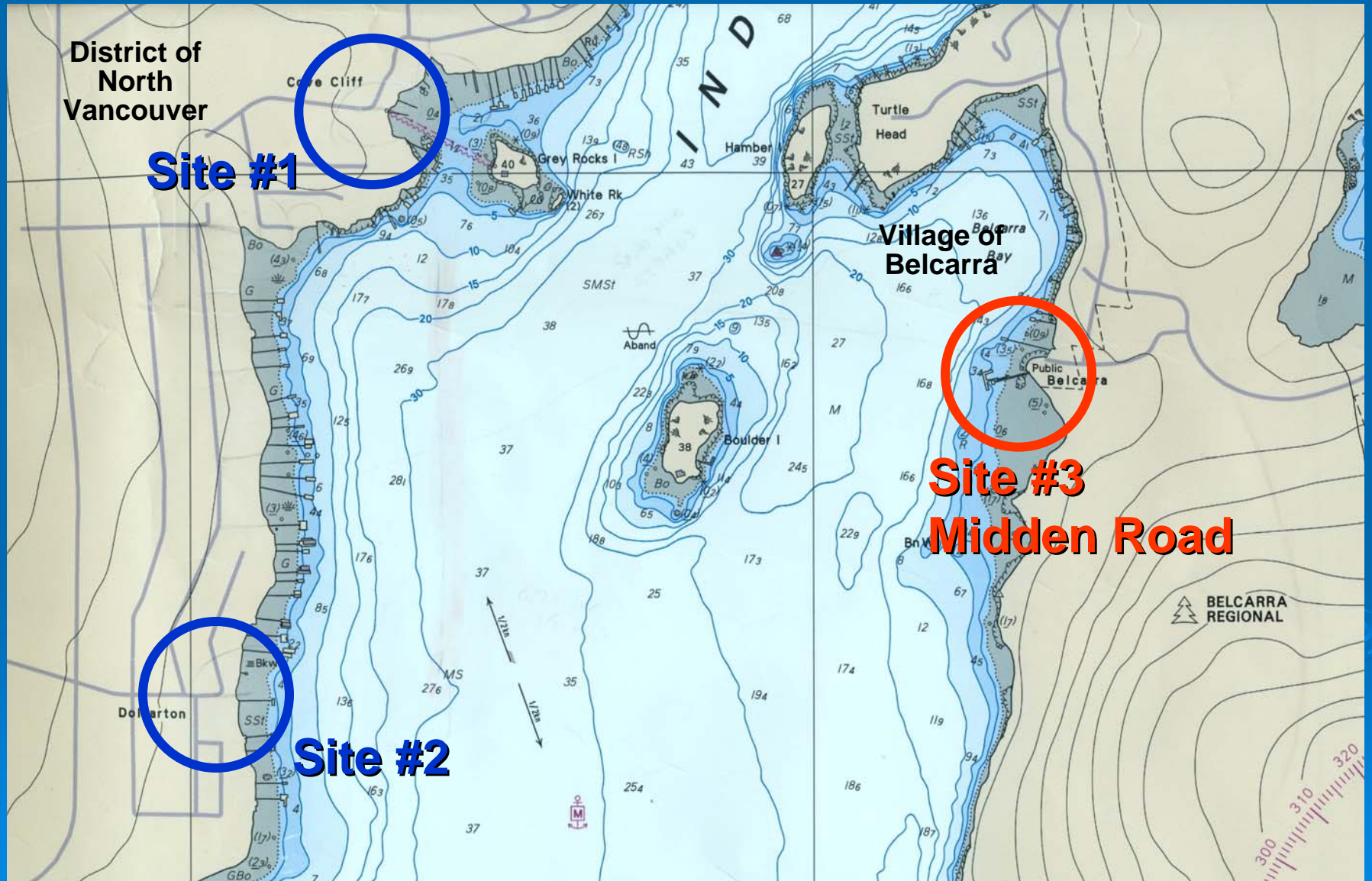


Site #2 Sea Shell Lane



- Alternative North Vancouver site
- Currently site of gravel water access path

Review of Alignments

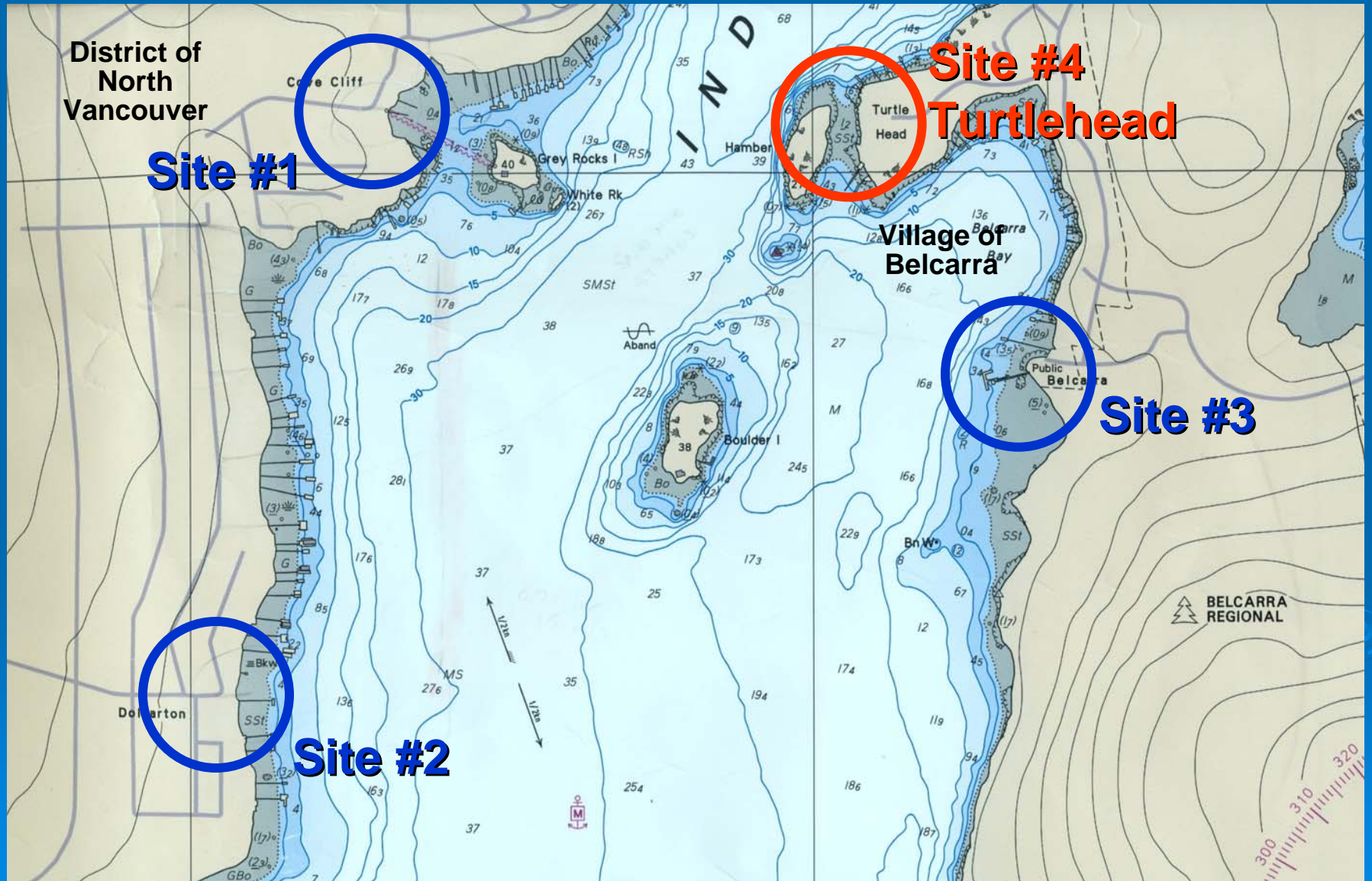


Site #3 Midden Road



- Preferred Belcarra access point
- North of public dock
- Above ground pipe placement to minimize rock removal
- Alternative site at Bedwell Bay Road R.O.W.

Review of Alignments

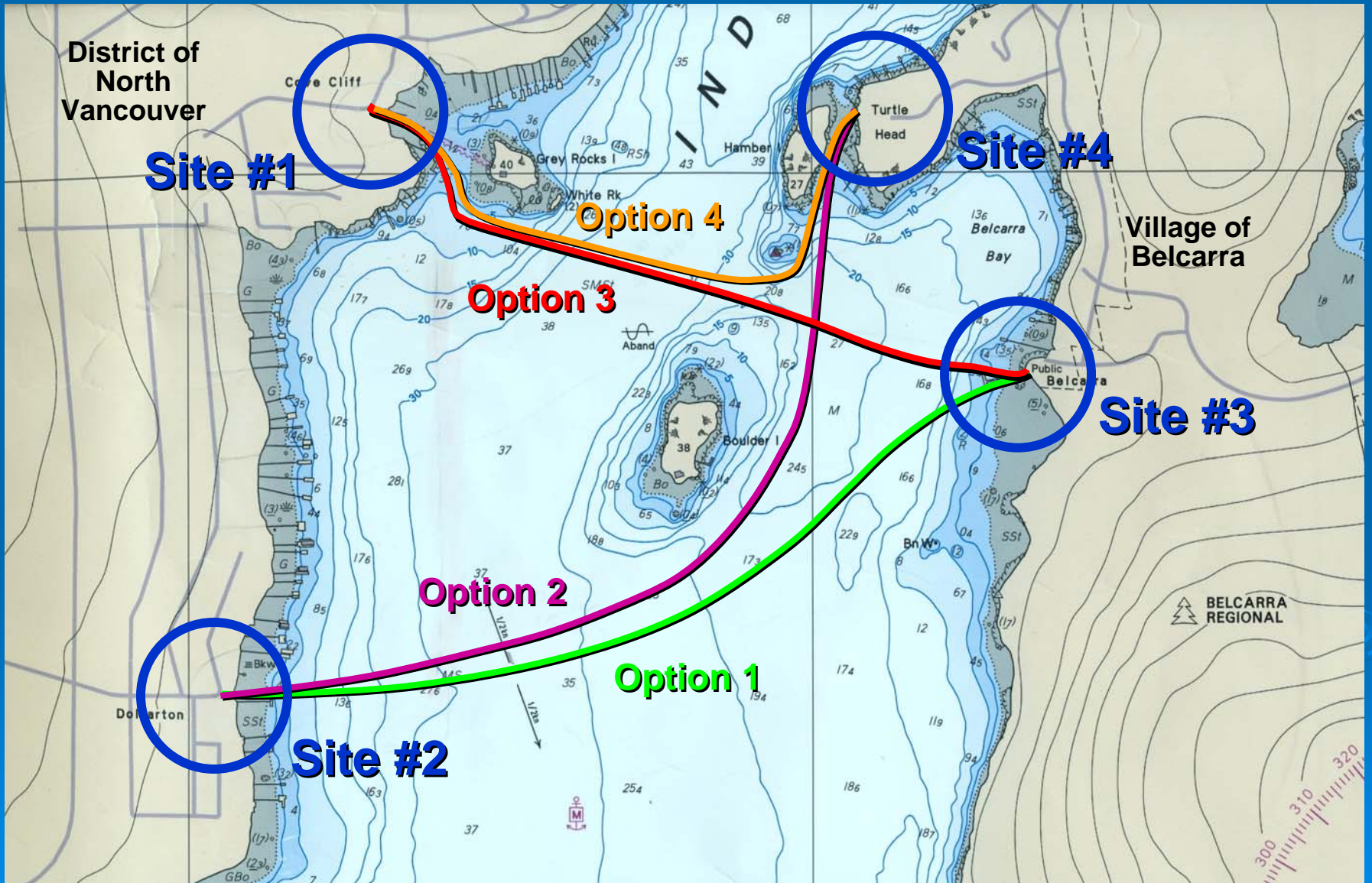


Site #4 Turtlehead

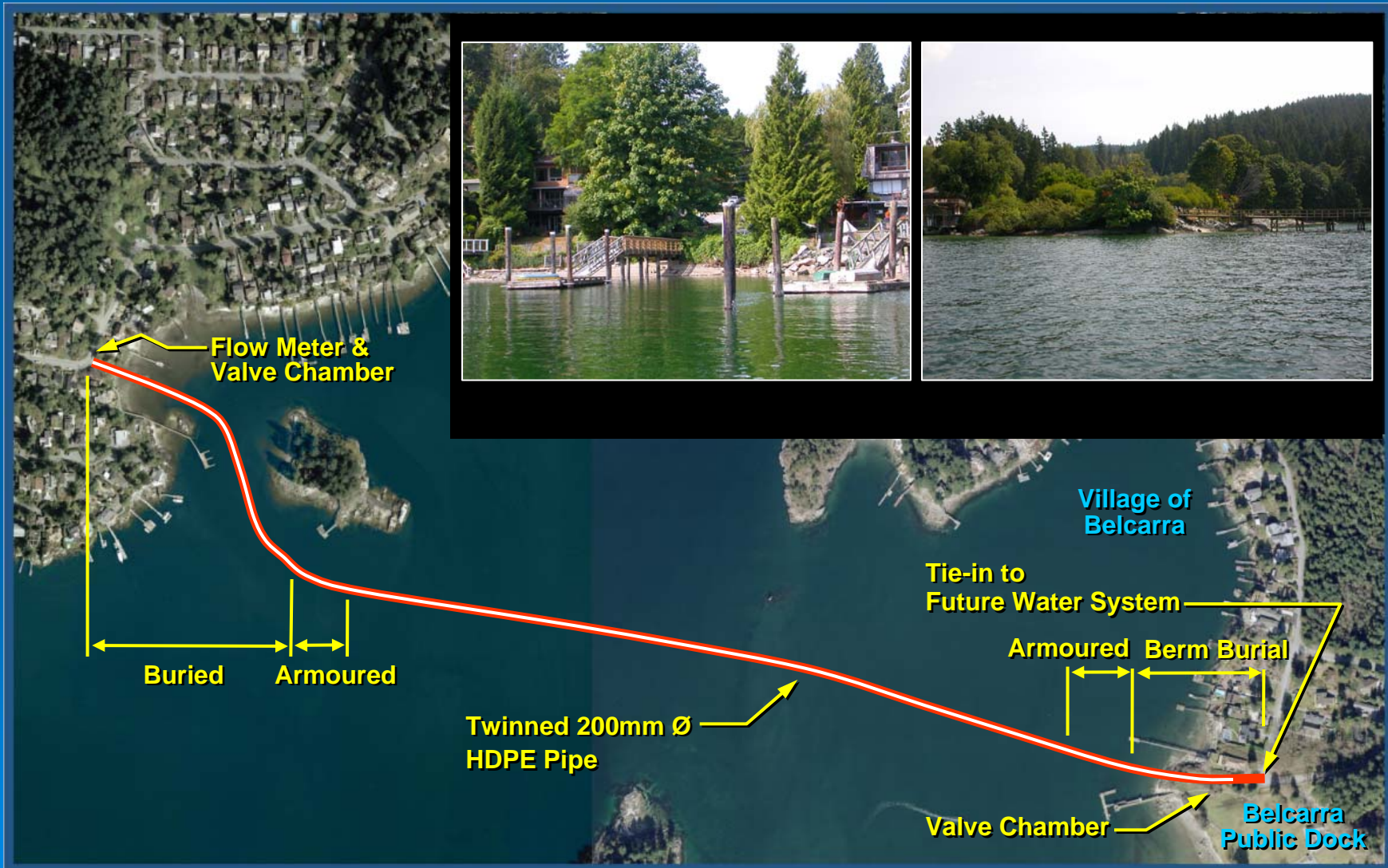


- Shortest distance from North Vancouver
- Site of existing storm sewer
- Narrow access making site this unattractive


Review of Alignments

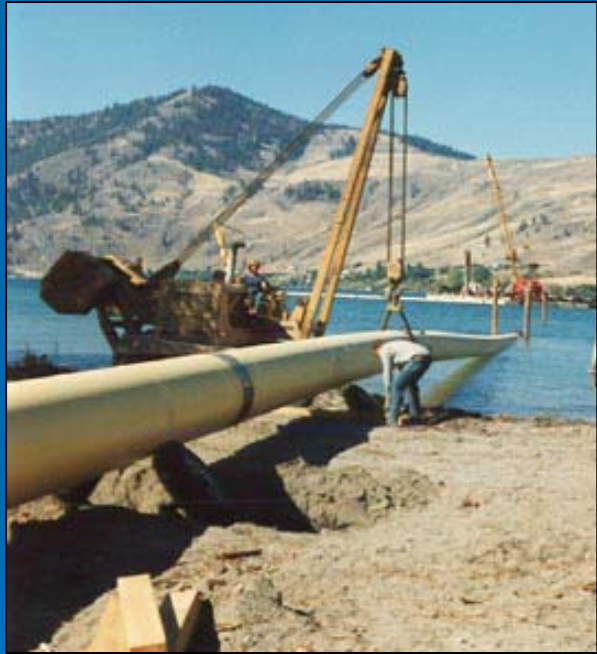


Preferred Alignment



Preferred Alignment

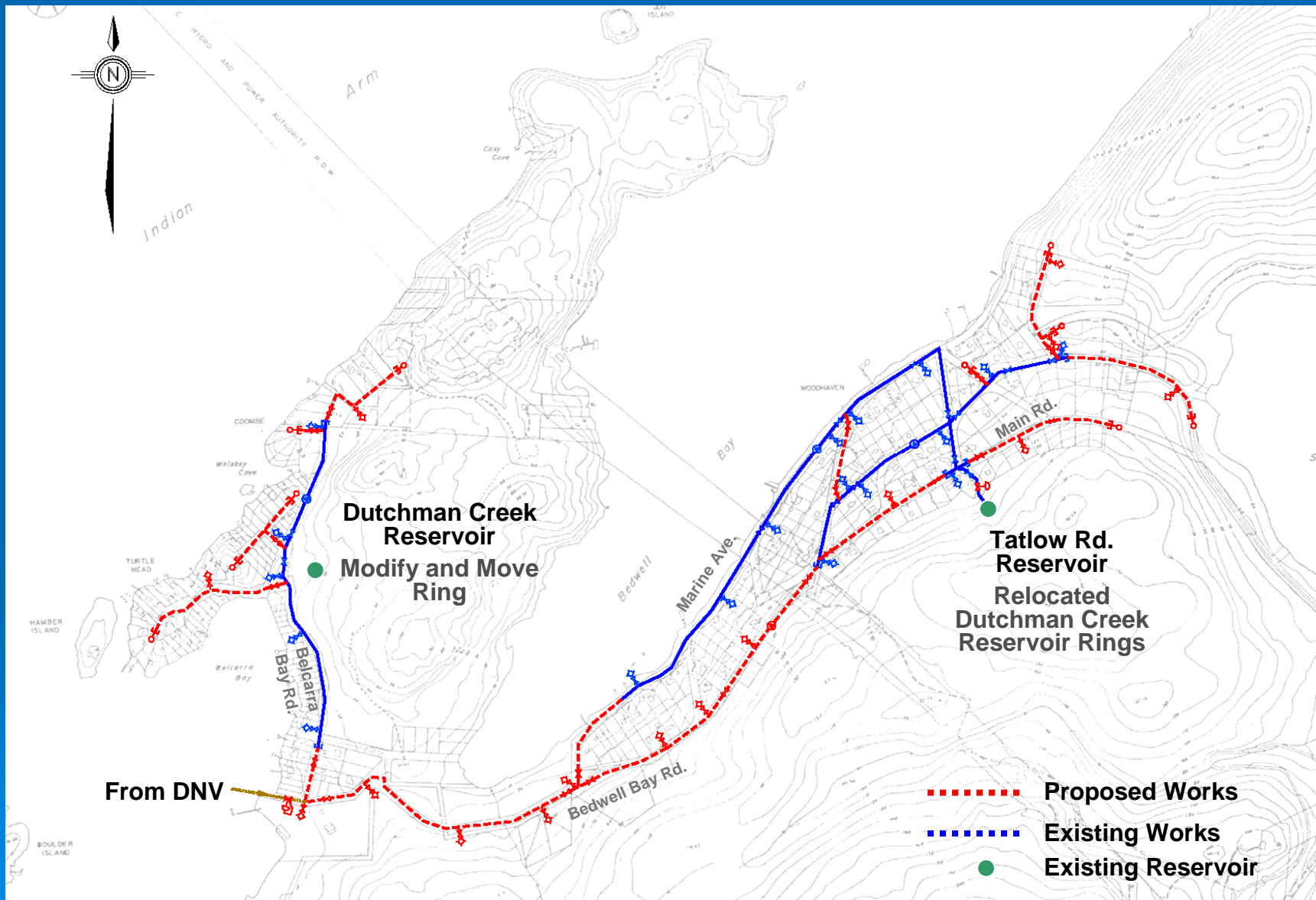
- Selected to minimize shoreline impacts
 - Follows a shallow alignment
 - Located near high capacity main in North Vancouver
 - Supplies Belcarra near middle of community
 - Favourable costs
- 




Belcarra Distribution System

- Will require the installation of 4635 m of new watermain
- Will require a pressure control valve
- Modifications to existing reservoirs
- Installation of residential water meters and service connections

Distribution System Modifications



Homeowner Concerns

- Pressures will range from 32 psi to 120 psi
 - All homes would be provided with a pressure reducing valve
 - Private plumber would connect household plumbing to municipal supply
- 

Capital Costs

Capital costs for major components:

Submerged watermain.....	\$2,560,300
Belcarra upgrades.....	\$2,195,200
Service connections.....	\$1,076,600
North Vancouver Upgrades.....	\$ 180,000
	<hr/>
Sub-total	\$6,012,100

Assuming 2/3 Provincial funding

Total \$2,004,000

Annual Cost of Water

- Charged based on a metered rate
- Likely based on block rate structure
- Assuming average consumption, annual cost of water **\$220/yr**
- GVRD municipality rates range from **\$200/yr to \$350/yr**

Payment Options

- Village portion could be financed through the BC Municipal Finance Authority (5% interest)
- Annual cost for debt recovery based on 265 properties is **\$632/yr**
- Annual cost around **\$859/yr** including cost of water

An aerial photograph of a large, deep blue body of water, likely a bay or fjord, surrounded by dark green forested hills. In the distance, a city with numerous buildings is visible across the water. The sky is a pale, hazy blue. The text "Questions and Comments" is overlaid in the center in a bold, green font with a black outline.

Questions and Comments