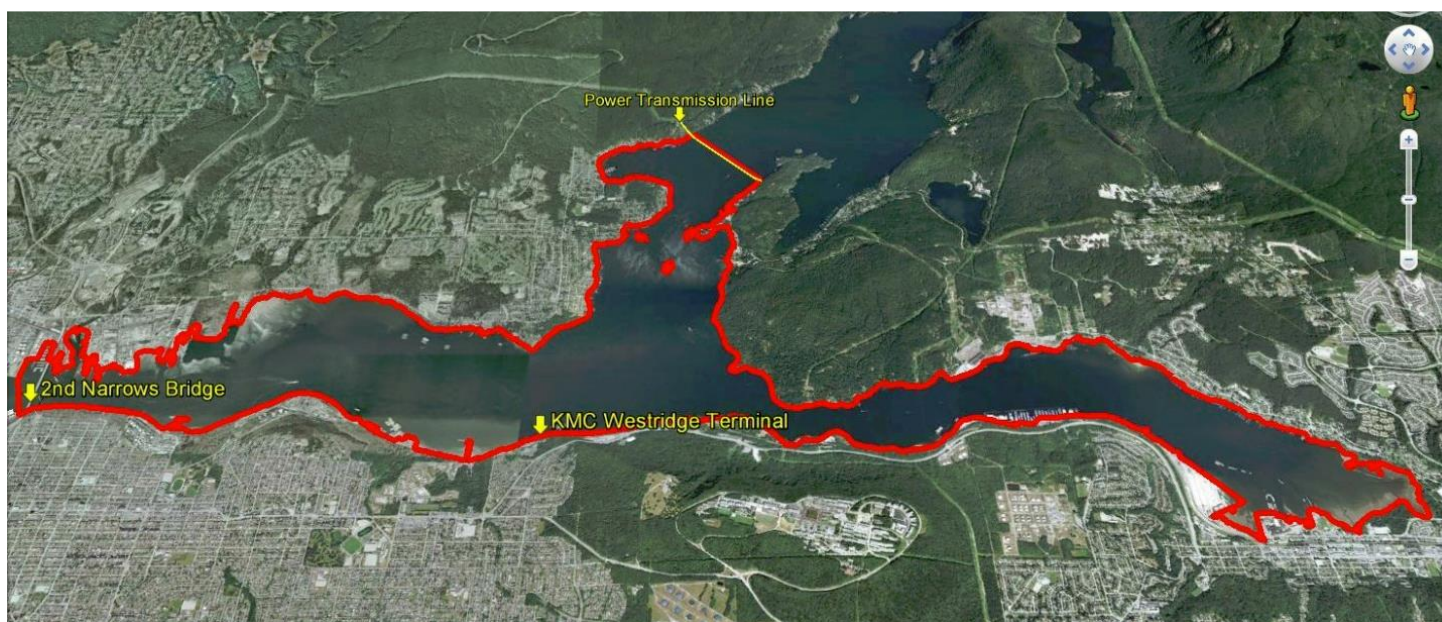


## Mayor's Report

### Central Burrard Inlet Environmental Emergency Planning Studies

On June 3<sup>rd</sup> [Kinder Morgan Canada](#) (KMC) provided Belcarra Council with a [briefing](#) on the [Trans Mountain Pipeline Expansion Project](#) (TMEP). Council spent an hour asking questions and engaging in discussion with Mike Davies, KMC's Director of Marine Development.

On June 19<sup>th</sup> KMC [announced](#) that it would be undertaking a study in cooperation with [Western Canada Marine Response Corporation](#) (WCMRC) to collect, update and store information about the shoreline environment in the vicinity of the KMC [Westridge Marine Terminal](#) (WMT) in Burnaby. The purpose of the project was to support environmental emergency planning by both KMC and WCMRC, who is the certified response organization for the area. The Central Burrard Inlet study area was defined as being between the Second Narrows Bridge on the west, Port Moody on the east, and north to the BC Hydro powerline crossing of Indian Arm (see annotated photo below). Field surveys were to be conducted in the low tide windows of June 20–28 and July 19–26, 2013.



On June 26<sup>th</sup> [we wrote to the president of KMC](#) to express Belcarra Council's support for the environmental work being undertaken, and to make two suggestions to complement the study:

- the shoreline study should include a post-mortem examination of the environmental monitoring and impact assessment of the 2007 oil spill; and
- the collection of baseline data on the aquatic life in the Central Burrard Inlet study area.

I can advise that we have now received a [letter of response from KMC](#) that included a partial [post-mortem of the 2007 oil spill](#) prepared by [Stantec](#) environmental consultants, and a summary of [KMC's incident response actions](#) in the event of an oil spill. Unfortunately, the response did not include a post-mortem of the WCMRC response to the 2007 oil spill which has necessitated a [follow-up letter to KMC that poses specific questions](#).

All of this environmental work will feed into the emergency preparedness planning process, and Belcarra Council will continue to monitor this process, ask questions of KMC and others, and continue to provide input on behalf of the Belcarra community.

**Ralph Drew**  
Mayor

July 31, 2013.